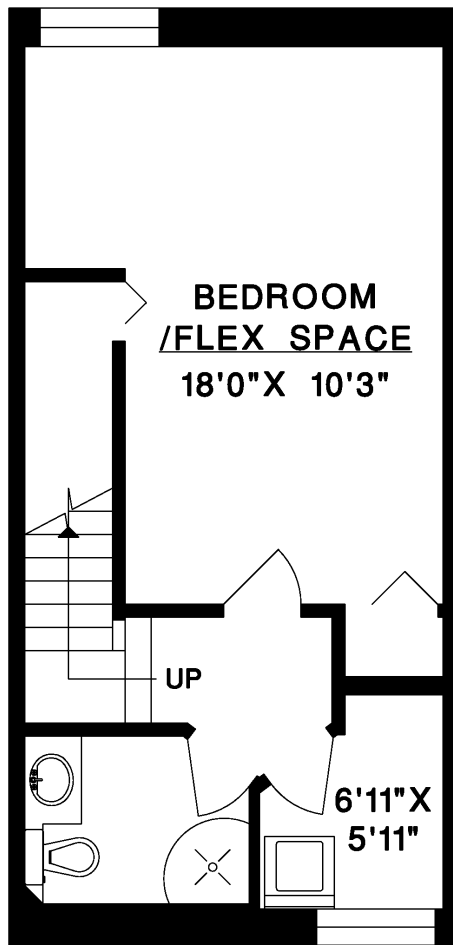


160 WEST 12TH STREET
NORTH VANCOUVER

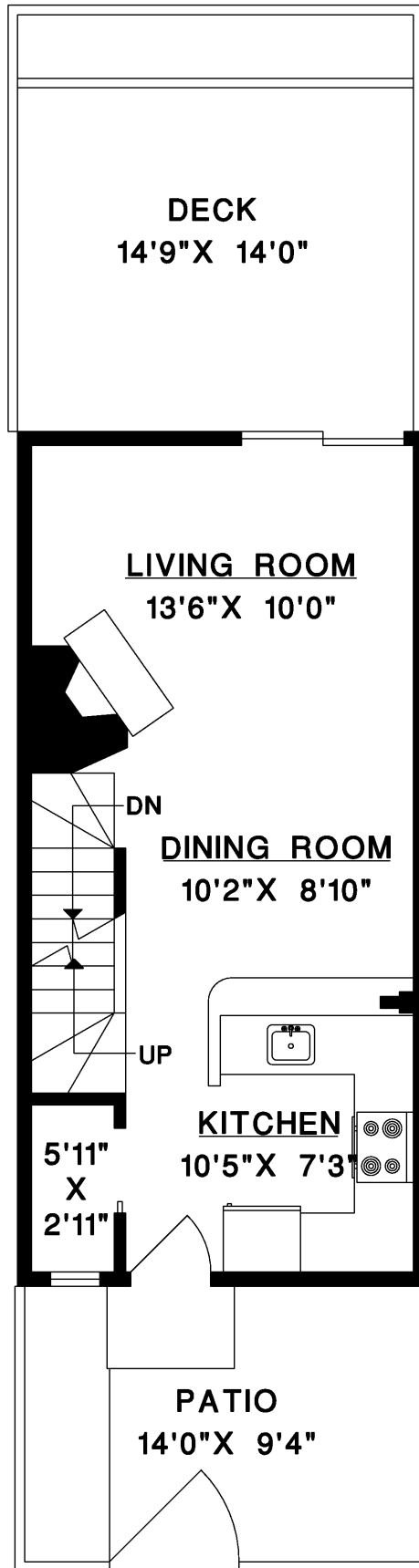
MAIN FLOOR 430 SQ.FT.
UPPER FLOOR 479 SQ.FT.
LOWER FLOOR 430 SQ.FT.

* **TOTAL** 1,339 SQ.FT.
DECK 207 SQ.FT.
PATIO 137 SQ.FT.

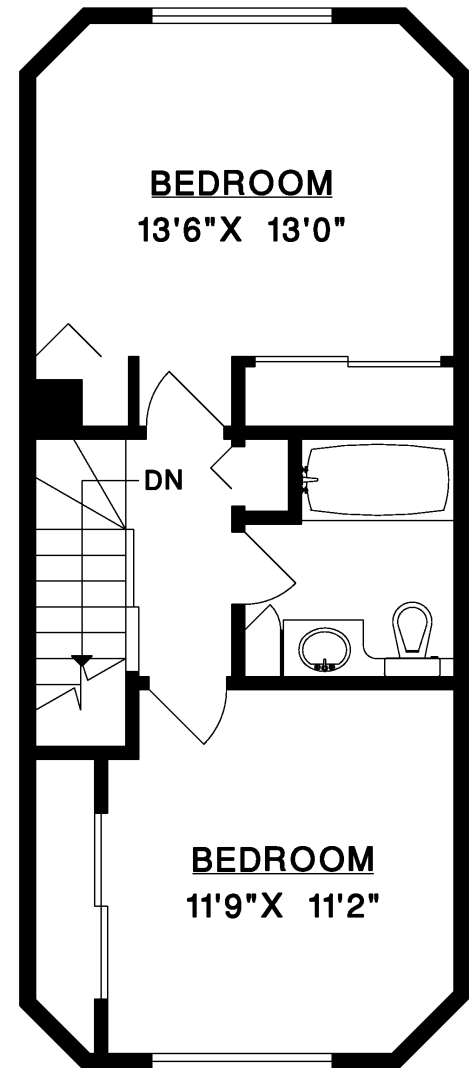
*AS PER STRATA MEASUREMENTS



LOWER FLOOR



MAIN FLOOR



UPPER FLOOR